

Midway

M A G I C

Welcome Aboard a Real Aircraft Carrier!

At the USS Midway Museum in downtown San Diego, California, restoration work on the "SINS Room" (Ship's Inertial Navigation System) is being done to bring the equipment back to life.

No carrier has the history or the crew to match the Midway. A 47-year odyssey that spanned the end of WWII and Desert Storm, an odyssey in which more than 225,000 Americans took part. It was almost magical how the crew and carrier responded to every call—both military and humanitarian.



When christened in 1945, the USS Midway became the largest ship in the world for the next 10 years and the first too large for the Panama Canal. Midway was the first steel-deck carrier in the Navy and would serve an unprecedented 47 years.

The "Midway Magic" story [continues here...](#)



"SINS" Room Binnacle

Sunstone Circuits is proud to contribute in part to the success of the "SINS Room" restoration project.

To review the technical information regarding the "SINS Room" circuit boards as progress is made to bring the electronic panels back to life, please watch Sunstone.com for updates or email: Sponsorship@sunstone.com

If you would like to assist this project please contact the project volunteer, David Barak directly at: dabarak@yahoo.com

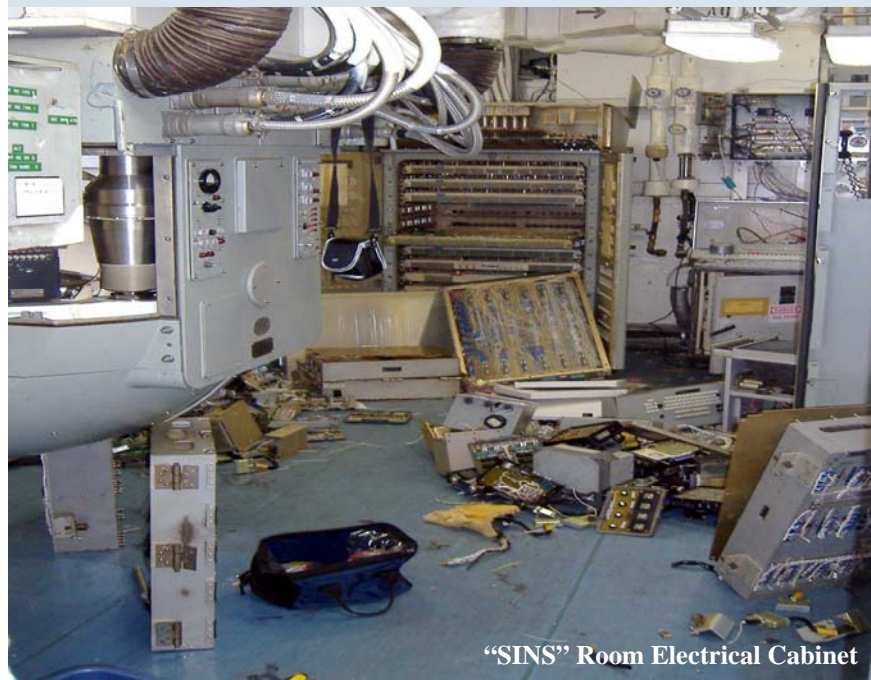
When the ship was decommissioned in 1992, much of the militarily sensitive equipment was "de-milled" -- demilitarized, so that classified technology couldn't be studied by those with bad intentions. This consisted of cutting most of the wiring behind various panels, smashing circuit boards and components, etc. As a result, the equipment would never be able to operate as before. Fortunately, everything visible to the casual observer was left relatively intact.

Volunteers in the Exhibits Department of the museum are working to simulate the operation of the system's vintage Univac mainframe computer and tape drives, as well as the gyroscope equipment and various control and alarm panels.

One panel featured push on/push off buttons that would light to indicate their status. The buttons originally incorporated small light bulbs, but in order to reduce costs and minimize maintenance, LEDs are being substituted for the bulbs. As a result, the mechanical latching mechanisms on the buttons had to be removed in order to provide access for the LEDs.



Small tactile momentary switches will be mounted to the back of what remains of the switches, and 4013B-based circuits, built on printed circuit boards provided by Sunstone Circuits. Each active switch will have its own small circuit board.



"SINS" Room Electrical Cabinet

Photos Courtesy of the San Diego Aircraft Carrier Museum



The USS Midway Museum is in the midst of a master 10-year build-out program, adding restored spaces and aircraft to the public tour every few months. Fleets of volunteers are in continuous motion to restore history and expand the visitor's educational experiences at the USS Midway Museum.

Climb aboard for your own adventure - get involved with the USS Midway Museum!
Web site: [Visitor Information, Volunteering and Contribution Opportunities](#)